



# MONTHLY MEMBERSHIP PROGRESS REPORT

District 8 I

Results as of: 3/31/2017

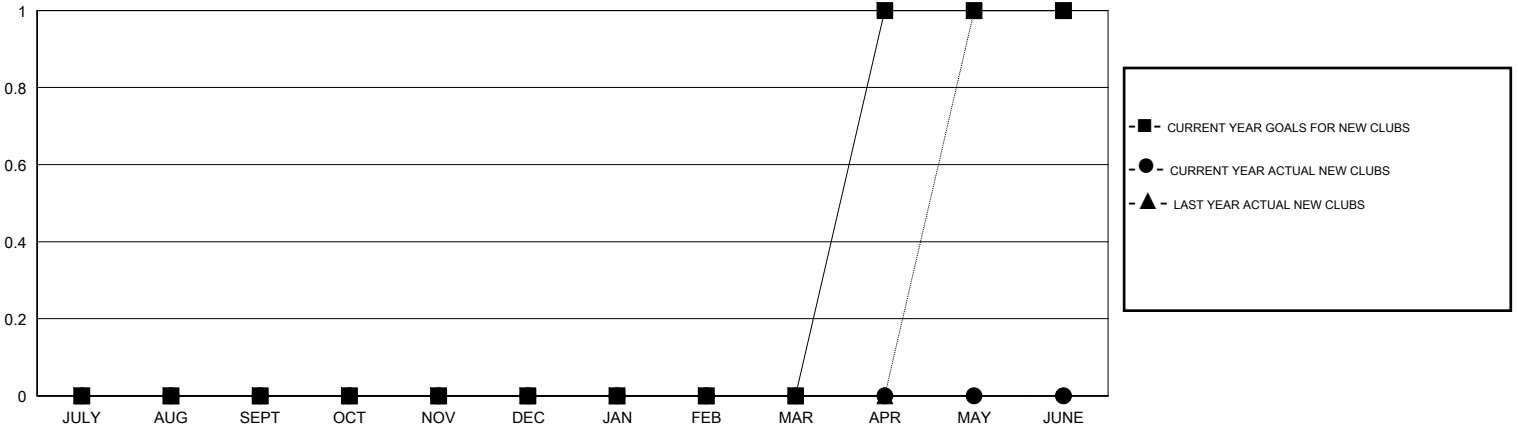
GMT: HAL GRIFFIN

LOCATION LOUISIANA

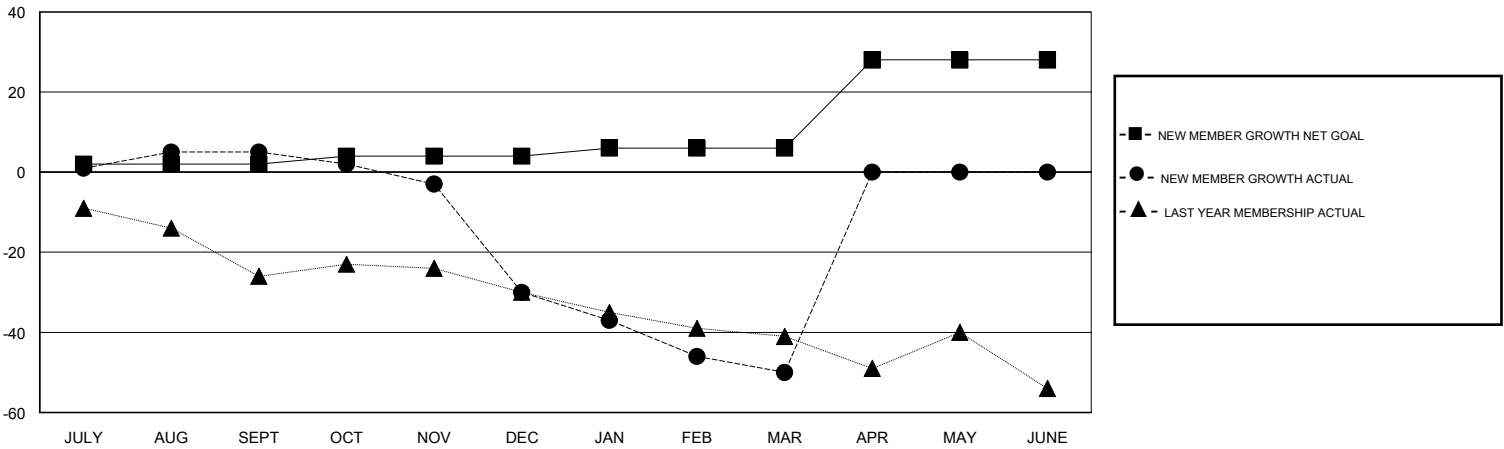
GMT CA

Clubs				Members			
RESULTS FOR 2016-2017				RESULTS FOR 2016-2017			
QUARTER	NEW CLUB GOAL	NEW CLUBS	DROPPED CLUBS	QUARTER	NEW MEMBER GROWTH NET GOAL (not reinstated or transfers)	NEW MEMBER GROWTH ACTUAL (not reinstated or transfers)	DROPPED MEMBERS ACTUAL (including transfers)
JULY/AUG/SEPT	0	0	0	JULY/AUG/SEPT	2	12	7
OCT/NOV/DEC	0	0	1	OCT/NOV/DEC	2	7	42
JAN/FEB/MAR	0	0	0	JAN/FEB/MAR	2	7	27
APR/MAY/JUNE	1	0	0	APR/MAY/JUNE	22	0	0

GOALS AND ACTUAL NEW CLUBS CUMULATIVE



GOALS AND ACTUAL MEMBERS CUMULATIVE



DROPPED CLUBS: 1	13 CLUBS OF 28 ADDED 1 OR MORE NEW MEMBERS	<u>GENDER DISTRIBUTION</u>
		MALE 523 (79.00%)
		FEMALE 139 (21.00%)
<u>DROPPED MEMBERS</u>	<a href="#">CLICK HERE FOR CUMULATIVE MEMBERSHIP DATA</a>	TOTAL FAMILY UNIT MEMBERS 57
DECEASED 4		FAMILY MEMBERS PAYING HALF DUES 29
CLUB CANCELLED 24		
OTHER 48		
<b>TOTAL 76</b>		